

# WMX SERIES

WMX-LG-50-120W-30K  
WMX-LG-50-120W-40K  
WMX-LG-50-120W-50K

LED OUTDOOR LIGHTING

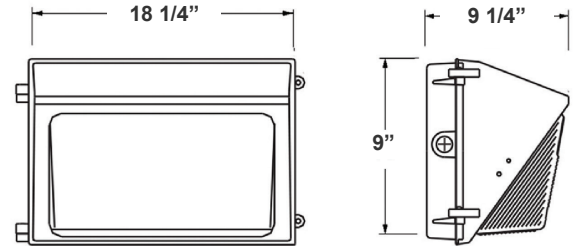
**WESTGATE**  
THE FUTURE IS HERE...AND IT'S QUITE BRIGHT!

Customer Name: \_\_\_\_\_

Project Name: \_\_\_\_\_

Note: \_\_\_\_\_

Type: \_\_\_\_\_



18 1/4"(W) x 9"(H) x 9 1/4"(D)

Ideal for general site lighting, alleys, loading docks, doorway, pathway, and parking areas.

## Features

- ADC12 Aluminum Heat Sink, Outdoor Powder Coating
- Connect One End or Both Ends (Dual Function)
- Multi-Power Switch is inside the Fixture
- 7-year warranty
- Prismatic Borosilicate Glass Lens

## Technical Specifications

### Electrical:

- Input Wattage: 50/80/100/120W
- Input Voltage: 120-277V AC 50/60Hz
- Input current: 1.4 A
- Power factor: >0.9
- Efficacy: 130 LPW

### Mechanical:

- ADC12 Aluminum Heat Sink, Outdoor Powder Coating
- Lens: Prismatic Borosilicate Glass Lens
- Same Footprint as Traditional HID Wall Packs
- Four 1/2" Hubs: 1 top, 1 on Each Side, 1 Rear
- Mounting: Wall Mounting
- Operating Temperature: -40°F ~ 104°F
- Lifespan: 70000 Hrs.
- IP rating: IP65, Wet Locations

### Lighting:

- Dimming: 0-10V Dimming
- Chip: Philips Lumileds LEDs
- Multi-Power Switch is inside the Fixture
- Total Lumens: 16500LM Max.
- Color Temperature: 3000K/4000K/5000K
- CRI: >70

### Applications:

- Ideal for general site lighting, alleys, loading docks, doorway, pathway and parking areas.
- Replace existing HID wall packs
- Great for use with photocell

### Other Models:

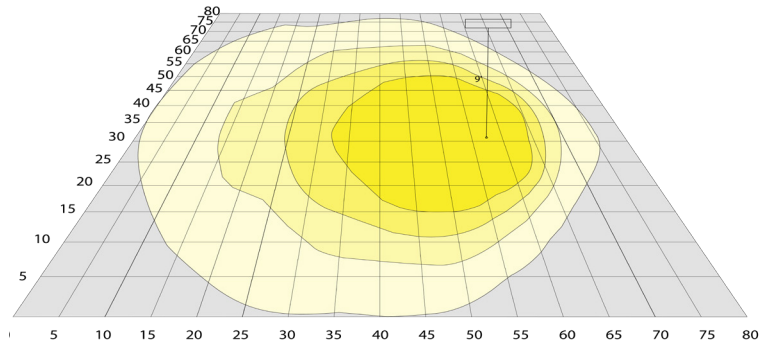
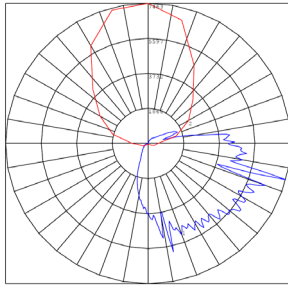
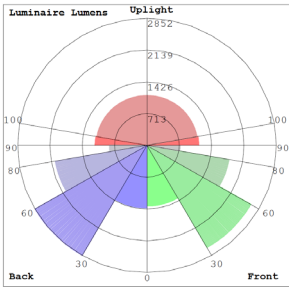
- 50W | 6800LM | WMX-MD-20-50W-30K
- 50W | 6800LM | WMX-MD-20-50W-40K
- 50W | 6800LM | WMX-MD-20-50W-50K
- 30W | 4200LM | WMX-SM-15-30W-30K
- 30W | 4200LM | WMX-SM-15-30W-40K
- 30W | 4200LM | WMX-SM-15-30W-50K
- 80W | 11200LM | WMX-MD-20-80W-30K
- 80W | 11200LM | WMX-MD-20-80W-40K
- 80W | 11200LM | WMX-MD-20-80W-50K



Phone: (877) 805-2252 | Fax: (877) 805-2252  
www.westgatemfg.com | www.westgatecontrols.co



**Photometrics:** WMX-LG-50-120W



BUG Rating: B3-U5-G4

Area 80'x 80' Mounting Height: 9'

**Other Views:**



Side View



Front View



Back View

**Performance Table:** WMX-LG-50-120W

MODEL NO.	Wattage	Voltage	Lumens	Color Temp.	BUG Rating	LPW
WMX-LG-50-120W-30K	50W	120-277V	7000LM	3000K 4000K 5000K	B3-U5-G4	130
			7150LM			
			7300LM			
			10500LM			
WMX-LG-50-120W-40K	80W		10900LM			
			11300LM			
			13100LM			
WMX-LG-50-120W-50K	100W		13600LM			
			14100LM			
WMX-LG-50-120W-50K	120W		15300LM			
			15900LM			
			16500LM			
		16500LM				



# Sample Ordering

Model	Size	Min. Watt	Max. Watt	Color Temp.
WMX	LG	50	120W	30K = 3000K 40K = 4000K 50K = 5000K

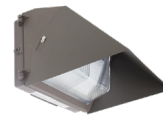
## Accessories:

Blank = No Option For Accessories  
 WML-SH3= SHIELD FOR WMXPRO 120W

## Factory-Installed Options:

Blank = No Option For Accessories  
 OPT-EM-OD3INT= INTERNAL EMERGENCY BACKUP BATTERY  
 OPT-SEN-3MRLV-5= PROGRAMMABLE MICROWAVE (BI-LEVEL FOR 80W & UP)  
 OPT-PC-B= BUTTON  
 OPT-CLR-85= COLOR PAINT  
 WEC-8RC= REMOTE CONTROL  
 OPT-TRS-T20= TAMPER RESISTANT SCREW

## ACCESSORY:



WML-SH3

## FACTORY-INSTALLED OPTIONS:



OPT-EM-OD3INT



OPT-PC-B



WEC-8RC



OPT-SEN-3MRLV-5

## Example:

1. WMX-LG-50-120W-50K (FOR 120W MAX 50K FIXTURE 120-277V)
2. WMX-LG-50-120W-50K (FOR 120W MAX 50K FIXTURE 120-277V)  
 OPT-EM-OD3INT (INTERNAL EMERGENCY BACKUP BATTERY)

## Dimensions:



WML-SH3  
 SHIELD FOR WMXPRO 120W

